



GRP Walkway: 18.31 meters
Model: NAC000130

Area of use

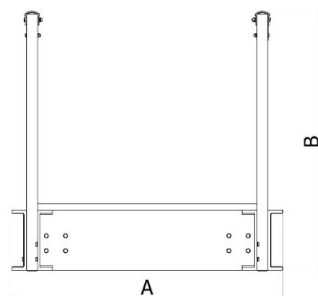
Utilized for bridging spaces over fish tanks, between walls, and as an alternative to traditional materials such as steel or wood, offering a more durable and corrosion-resistant option in the challenging conditions associated with aquaculture. Features include:

- Corrosion resistance
- Light Weight / High Strength
- Simple to install
- Smooth surface (ideal for areas above fish tanks against jumping fish)
- Non-slip surface
- Easy to clean

Materials:

GRP - EN 13706-3:2002

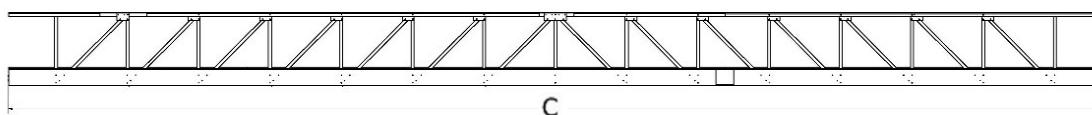
Stainless Steel – EN 1.4401 / AISI 316



Accessories:

NAC000140 Structure and Support legs for Walkways in between

NAC000150 Structure and Support legs for Walkways in the end



Product Specifications:

Product No.	A	B	C	Weight	Load Max
NAC000120	1270 mm	1200 mm	15.400 mm	970 kg	350 kg. pr. mtr.
NAC000130	1270 mm	1200 mm	18.310 mm	1.250 kg	350 kg. pr. mtr.
NAC000140	1270 mm	2210 mm	2.980 mm	260 kg	3.980 kg
NAC000150	1270 mm	2210 mm	1.280 mm	200 kg	3.980 kg