



# GRP Walkway: 14.5 meters

## Model: NAC-00120

### Area of use

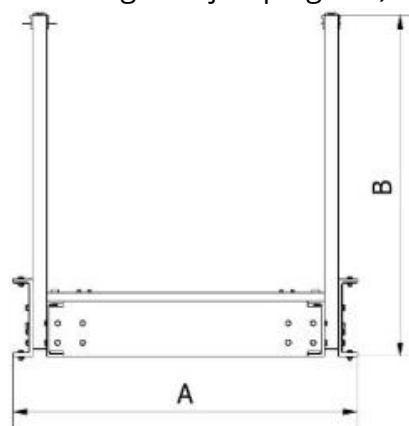
Utilized for bridging spaces over fish tanks, between walls, and as an alternative to traditional materials such as steel or wood, offering a more durable and corrosion-resistant option in the challenging conditions associated with aquaculture. Features include:

- Corrosion resistance
- Light Weight / High Strength
- Simple to install
- Smooth surface (ideal for areas above fish tanks against jumping fish)
- Non-slip surface
- Easy to clean

### Materials

GRP - EN 13706-3:2002

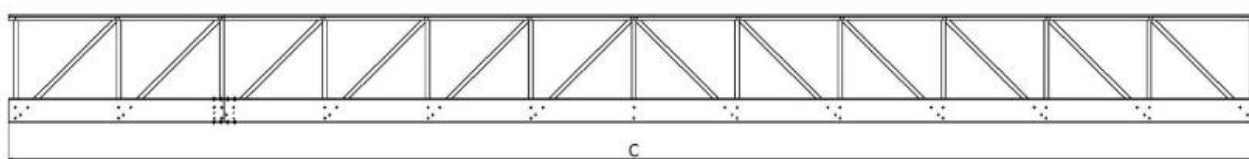
Stainless Steel – EN 1.4401 / AISI 316



### Accessories

NAC-00140 Structure and Support legs for Walkways in between.

NAC-00150 Structure and Support legs for Walkways in the end.



### Product Specifications

Product No.	A	B	C	Weight	Load Max
NAC-00120	1270 mm	1200 mm	14.500 mm	970 kg	350 kg. pr. mtr.
NAC-00130	1270 mm	1200 mm	18.310 mm	1.250 kg	350 kg. pr. mtr.
NAC-00140	1270 mm	2210 mm	2.980 mm	260 kg	3.980 kg
NAC-00150	1270 mm	2210 mm	1.280 mm	200 kg	3.980 kg